

MEDTECH[®] 
Caring for life

MANIPOL MESSAGER MPV1



USER MANUAL

Please read the operation book before using, especially the part of attention.Keep it properly.Thank you.

Massage principle

Massage is a traditional Indian medicine external treatment , is through a variety of means of action to the surface of the particular site, regulating the body's physiological, pathological conditions, achieve the effect of therapy and health care as a method.Effects of massage on the principle, mainly reflected inthe change of biological information system function, adjustment and correction of abnormal cutting position three. It is the main treatment method of certain diseases or auxiliary measures, use very extensively.

According to the theory of traditional Indian medicine, especially the main and collateral channels theory emphasizes on the human body through the main and collateral channels, acupoints and visceral exists between the organic immanent connection.Visceral disease can be reflected on the surface of the body surface through the main and collateral channels, collaterals, acupoint massage to stimulate, dredge main and collateral channels, lubricating joints, promote qi and blood running through the main and collateral channels, can also be disease "information" to convey to the diseased organs, strengthen the internal organs function, strengthen the body's resistance, thus play a role in health care.

From the modern medical knowledge of anatomy. Stimulation of human skin, muscle, joint neural, vascular and lymphatic etc, to promote the local blood circulation, improve the new supersedes the old., so as to promote the body's natural resistance to disease, promote the absorption of the inflammatory exudate, relieve muscle spasm and pain.

Product Part Introduction



How to use

1. Press “**⏻**” key to turn the massager on or off.
2. Press “**⚙️**” key to use the auto massage mode. There are a total of three massage modes to choose from.
3. Press “**⏩**” key to increase or decrease the massage intensity level. There are a total of five intensity levels to choose from.
4. The massager will automatically turn off after 15 minutes.
5. After use, you must turn off the product by pressing the off key.

Massage Heads



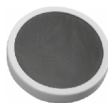
**BALL
MASSAGE HEAD**



**SCRAPING
HEAD**



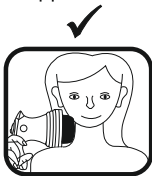
**WAVY
MASSAGER HEAD**



**FROSTING
MASSAGER HEAD**

Notice

1. After using and before cleaning, you must unplug .
2. If the machine operation is informal, please cut off power immediately, as soon as possible to contact the dealer.
3. If the supply cord is damaged, you must use a special cord or repaired it by the manufacturer.
4. Pregnant women, skin disease, heart disease and other diseases, inflammation of the skin ,do not use it, please
5. The children or the disabled can not use the machine.
6. Do not use it over 15 minutes in the same position.
7. Do not use this machine in damp places, such as bath room.
8. It is suggested that using it an hour after the meal.
9. If replacing the massage head, please make sure the machine has stopped .



Use it Protective clothing correctly to protect the hair



If use it wrongly, the hair will be tangled.

Repairing and maintenance

1. After using, place the product in a clean place, no direct sunlight.
2. Do not pull the cord or pull the product with cord.
3. Do not make water into the product.
4. Please use the soft cloth to clean the machine.

Technical parameters

Voltage : AC 220V

Frequency : 50Hz

Rated power : 25W

Warranty conditions

Manipol Massager MPV1 is made under strict quality control & utmost care is taken to ensure long, trouble free service.

- This unit is warranted for a period of 12 month from the date of purchase.
- We undertake to repair or replace at our discretion any part which was originally defective, provided the unit was not tampered with or mishandled.
- The warranty is only against manufacturing defects & shall not be applicable in case of damage due to accident, acts of nature, loss of components, intentional damage, and improper installation or if it was opened or service by authorized persons.
- The warranty is void, if the set is not operated according to instructions given in the "Instruction manual booklet", if any repair work is carried out by persons other than authorized company personnel, defects are caused by improper or reckless use, which shall be determined by company personnel.
- Warranty does not cover accessories external to the equipment, defects caused due to causes beyond control like lighting, abnormal voltage, acts of God or while in transit to service centre or to purchasers/premises.



**MANIPOL MESSENGER
MPV1**

WARRANTY CARD

Subject to Mumbai Jurisdiction only

No.

Model

Serial No.

Invoice No. Date:

**Stamp and Signature
of Dealer**

**Name and Address
of Dealer**



Marketed by: MEDTECH LIFE PVT. LTD.

Regd. address: B6, Byculla Service Industries,
Off D. K. Marg, Byculla, Mumbai-400 027, Maharashtra, INDIA.

For Consumer complaint, Please contact Consumer Care

Officer at Regd. address 📞/📧 +91 720 8088 720

📧 support@medtechlife.com 🌐 www.medtechlife.com